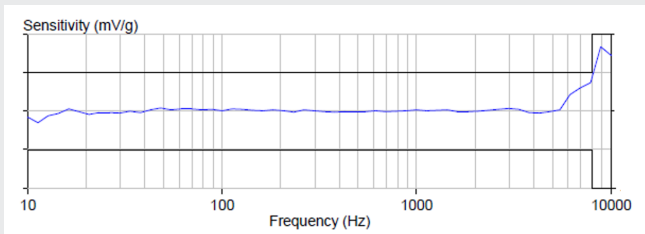


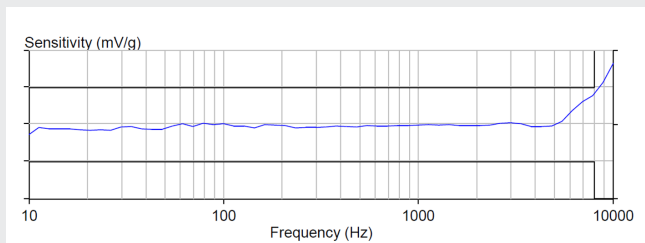
AT/28 Tri-Axial Accelerometer

TYPICAL FREQUENCY RESPONSE

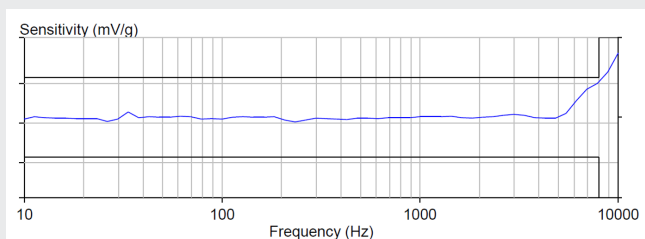
X Axis



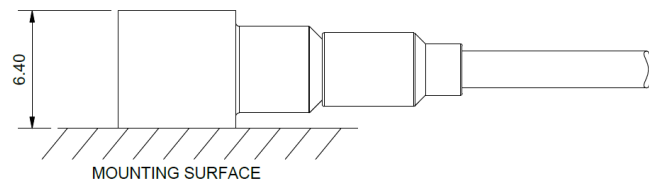
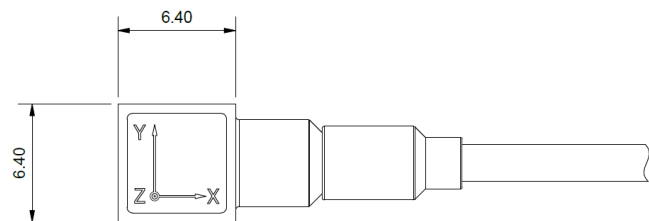
Y Axis



Z Axis



DIMENSIONS



TECHNICAL SPECIFICATIONS

SENSITIVITY @160 Hz, 1g (mV/g)	5	10
MEASUREMENT RANGE (g)	±1000	±500
FREQUENCY RANGE (±5%)	5 Hz – 8 kHz	
FREQUENCY RANGE (±10%)	2 Hz – 10 kHz	
BROADBAND RESOLUTION (g rms)	0.002	0.001
NON LINEARITY (%)	1	
DISCHARGE TIME CONSTANT (s)	≤ 1	
RESONANCE FREQUENCY (kHz)	≥ 50	
TRANSVERSE SENSITIVITY (%)	≤ 5%	
EXCITATION VOLTAGE (V DC)	20 – 30	
CONSTANT CURRENT EXCITATION (mA)	2–20	
OUTPUT IMPEDANCE (Ω)	≤ 100	
OUTPUT BIAS VOLTAGE (V)	8 – 12 V	
MAX ACCELERATION (g)	1500	1500
SPECTRAL NOISE (μg/√Hz)	80	40
SINUSODIAL VIBRATION LIMIT (g rms)	2000	1500
SHOCK LIMIT (g pk)	3000	2000
TEMPERATURE RANGE (°C)	-50 to +100	
TEMPERATURE RESPONSE (%/°C)	-0.07	-0.13
SEALING	Laser Welding IP68	
CASE MATERIAL	Titanium Alloy	
SIZE	6.4mm cube	
ELECTRICAL CONNECTOR	3m Integral cable 4 core	
MOUNTING	Adhesive (reccomended Loctite 496)	
WEIGHT (grams)	1.5	
OUTPUT CONNECTOR	3x BNC (other connectors available upon request)	
SENSING ELEMENT	Piezoelectric Ceramic	

DJB INSTRUMENTS UK LIMITED

e: sales@djbinstruments.com

t: +44 (0) 1638 712288

w: djbinstruments.com

a: Finchley Avenue, Mildenhall, Suffolk, IP28 7BG



SPECIFICATIONS MAY BE SUBJECT TO CHANGE WITHOUT PRIOR NOTICE.

ALL DEVICES CALIBRATED IN ACCORDANCE WITH BS ISO 16063-21:2003. ALL DEVICE CALIBRATIONS ARE UKAS TRACEABLE.