

## AT/11 Triaxial Piezo-Tronic IEPE Accelerometer

1mV/g up to 100mV/g  $\pm 10\%$  17gm Std Temp 125°C (185°C HT)

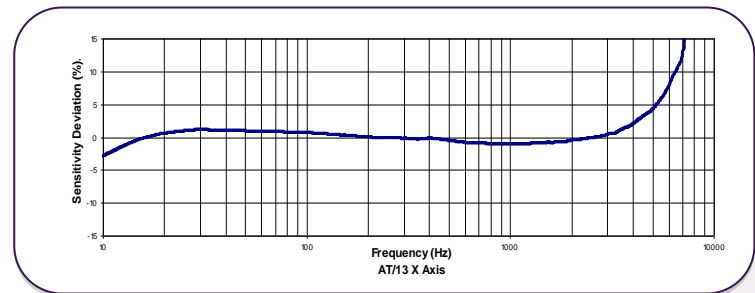
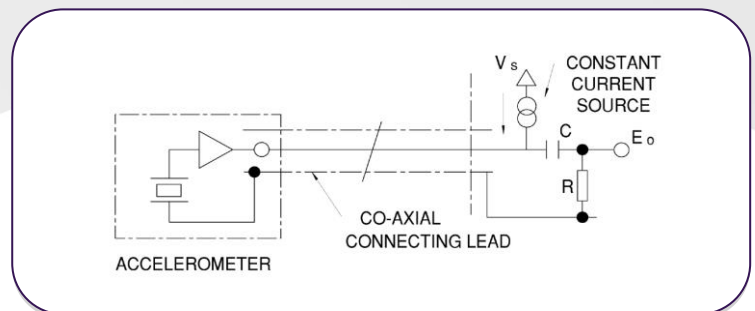
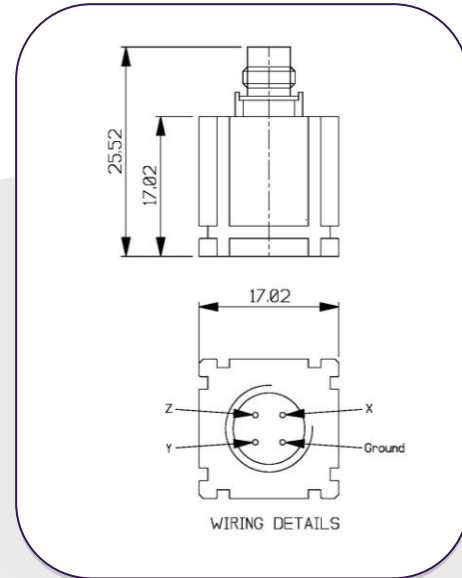


The AT/11 has been developed primarily for the Modal Analysis and Structural test marketplace with particular focus on the Automotive and Aerospace markets. It can be used as a direct replacement for the B&K 4506 accelerometer, fitting into the same clip mounting.

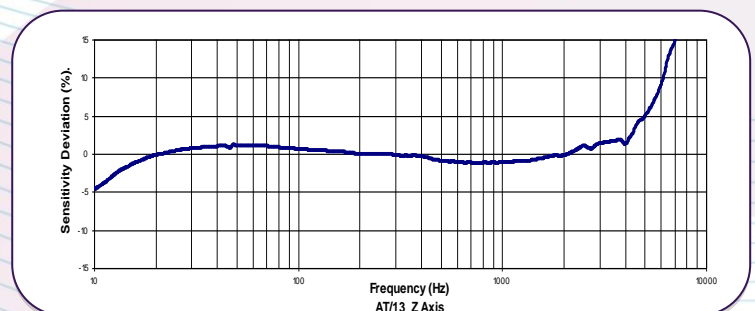
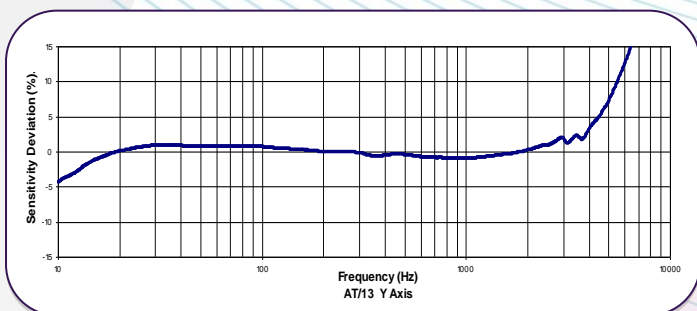
The slotted sides and a slotted base allow it to be mounted on 5 of its faces by sliding into the accompanying clip. Users can then mount the clips using normal glue methods and slide the accelerometers in and out of the clip as required. This ensures perfect repeatability for tests without the need for leaving the accelerometer in situ. In addition, for large channel count testing, all accelerometers can be mounted in the same orientation making software set up easier.

Manufactured in Titanium for low mass and long life, the AT/11 has three individual Konic shear sensing elements internally mounted in the three orthogonal axes; this provides excellent performance in each axis with minimal cross axis effects.

The AT/11 is available as IEPE voltage output.



### Typical Frequency Response



**DJB Instruments (UK) Ltd**

Finchley Avenue,  
Mildenhall, Suffolk IP28 7BG

Tel +44 (0)1638 712 288  
Email [sales@djbstruments.com](mailto:sales@djbstruments.com)  
Web [www.djbstruments.com](http://www.djbstruments.com)

A UK company with UK-based manufacturing, assembly and calibration in-house.

DJB Iss.1

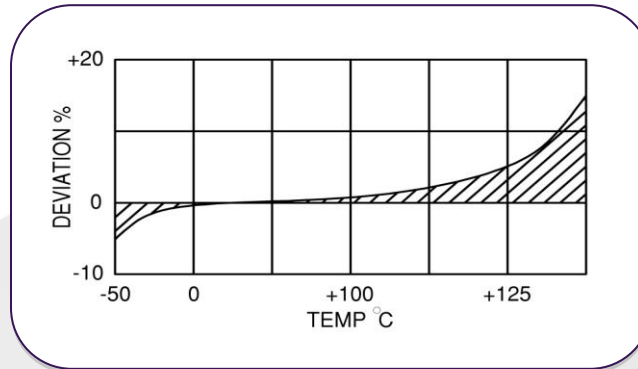




## AT/11 Triaxial Piezo-Tronic IEPE Accelerometer

1mV/g up to 100mV/g  $\pm 10\%$  17gm Std Temp 125°C (185°C HT)

### Temperature Response



	Metric		Imperial	
	Voltage Sensitivity $\pm 10\%$	1.02m/s <sup>2</sup>	10.2m/s <sup>2</sup>	10mV/g
Resonant frequency kHz	Z Axis 33	X/Y Axis 20	Z Axis 33	X/Y Axis 20
Cross Axis error % max	5		5	
Temperature Range	-50/+125°C HT Version 185°C		-58/+257°F HT Version 18°F	
Voltage sensitivity deviation re 20°C/68°F	-5% @ -50°C +5% @ +125°C max 185°C		-5% @ -58°F +5% @ +257°F max 365°F	
Supply voltage V DC	15/ 35		15/ 35	
Supply voltage Ma	2/15		2/15	
Bias voltage V DC (20°C/68°F)	9/10		9/10	
Settling time to 90% final val. secs	<1		<1	
Max continuous accn. sine	49,033m/s <sup>2</sup>		5000g	
Saturation Limit	4,903m/s <sup>2</sup>		500g	
Frequency Response	1Hz-6kHz	20Hz-6kHz	1Hz-6kHz	20Hz-6kHz
L.F corner frequency, Hz	0.1		1	
Case material	Titanium Grade 2		Titanium Grade 2	
Mounting	Adhesive or Clip Mounting		Adhesive or Clip Mounting	
Weight	17g		0.60oz	
Case seal	Welded hermetic connector		Welded hermetic connector	
Size	17 x 17 x 17mm		0.67 x 0.67 x 0.67in	
Connector	4 pin ¼ - 28 UNF		4 pin ¼ - 28 UNF	

#### DJB Instruments (UK) Ltd

Finchley Avenue,  
Mildenhall, Suffolk IP28 7BG

A UK company with UK-based manufacturing, assembly and calibration in-house.

Tel +44 (0)1638 712 288  
Email [sales@djbstruments.com](mailto:sales@djbstruments.com)  
Web [www.djbstruments.com](http://www.djbstruments.com)

DJB Iss.1

