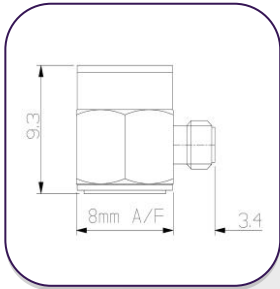




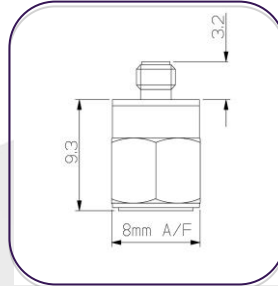
A/124/E, A/124/TE, A/124/TS Miniature Piezo-Tronic IEPE Accelerometer

1mV/g up to 200mV/g $\pm 10\%$ 2gm Std temp 125°C (HT 185°C)

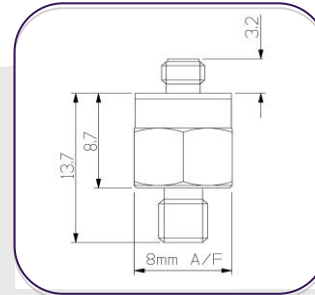
A/124/E



A/124/TE



A/124/TS



A three variant range of low mass (2gm.) accelerometers featuring:

- Konic shear sensing element
- Fully welded construction
- Miniature L8 M3.5mm thd, side or top entry coaxial connector
- Titanium case.

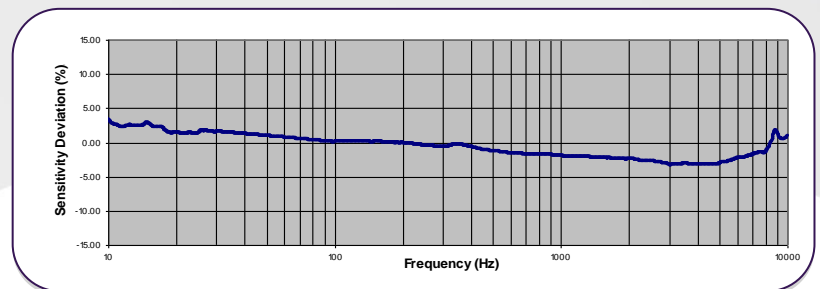
The A/124/E and A/124/TE, are adhesive mounted, whilst the top entry connector version (A/124/TS) is also available with integral mounting stud.

The A/124 range offers an inexpensive low mass option for a wide range of vibration measurement application including:

- Modal analysis
- PCB board mounted
- Aerospace Applications

Available as a high temperature 185°C IEPE Version

Typical Frequency Response



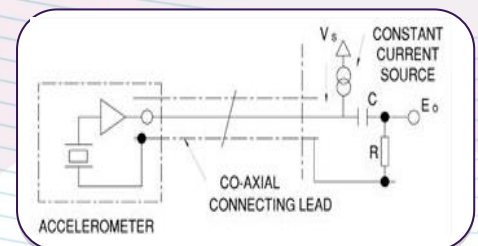
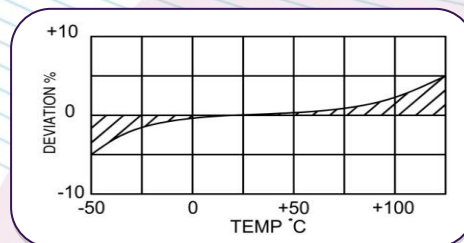
Note:

Voltage sensitivities shown are standard. We offer a wide range of sensitivities on request, and recommend that applications are evaluated to determine the requisite sensitivity.

Spectral Noise

| | |
|-------|--------------------------|
| 1Hz | 345 μ g/ \sqrt Hz |
| 10Hz | 156 μ g/ \sqrt Hz |
| 100Hz | 44 μ g/ \sqrt Hz |
| 1kHz | 12.1 μ g/ \sqrt Hz |
| 10kHz | 8.2 μ g/ \sqrt Hz |

Temperature Response





A/124/E, A/124TE, A/124/TS
Miniature Piezo-Tronic IEPE Accelerometer

1mV/g up to 200mV/g $\pm 10\%$ 2gm Std temp 125°C (HT 185°C)

| | Metric | | | Imperial | | |
|--|---|--------------------------------|--------------------------------|---|--------|---------|
| | 0.1 mV/(m/s ²) | 1.02 mV/(m/s ²) | 10.2 mV/(m/s ²) | 1mV/g | 10mV/g | 100mV/g |
| Voltage Sensitivity mV/g $\pm 10\%$ | 0.1 mV/(m/s ²) | 1.02 mV/(m/s ²) | 10.2 mV/(m/s ²) | 1mV/g | 10mV/g | 100mV/g |
| Resonant frequency kHz | ≈50 | | | ≈50 | | |
| Cross Axis error % max | 5 | | | 5 | | |
| Temperature Range | -50/+185°C (HT) | | | -58/+365°F (HT) | | |
| Voltage sensitivity deviation re 20°C/68°F | -5% @ 50°C +5% @ +125°C +/- 10% @ +185°C | | | -5% @ 58°F +5% @ +257°F +/- 10% @ +365°F | | |
| Supply voltage V DC | 15/35 standard | | | 15/35 standard | | |
| Supply voltage mA | 2/15 | | | 2/15 | | |
| Bias voltage V DC | 8/10 | | | 8/10 | | |
| Settling time to 90% final val. secs | <1 | | | <1 | | |
| Max continuous accn. g sine | 49,033m/s ² | | | 5000g | | |
| Saturation limit g | 49,033m/s ² | 4,903m/s ² | 490.3m/s ² | 5000g | 500g | 50g |
| Frequency Response | 1Hz-10KHz $\pm 5\%$ | | | 1Hz-10KHz $\pm 5\%$ | | |
| L.F Frequency Cut Off (-3dB) | 0.1 | 0.2 | | 0.1 | 0.2 | |
| Case material | Titanium Grade 2 | | | Titanium Grade 2 | | |
| Mounting | Flat base, adhesive A/124/E, TE M4x5mm integral stud A/124TS | | | Flat base, adhesive A/124/E, TE M4x5mm integral stud A/124TS | | |
| Weight | 2gm | | | 0.07oz | | |
| Case seal | Welded | | | Welded | | |
| Size | 8(A/F) x 9mm | | | 0.31(A/F) x 0.35in | | |
| Connector | M3.5KP | | | M3.5KP | | |