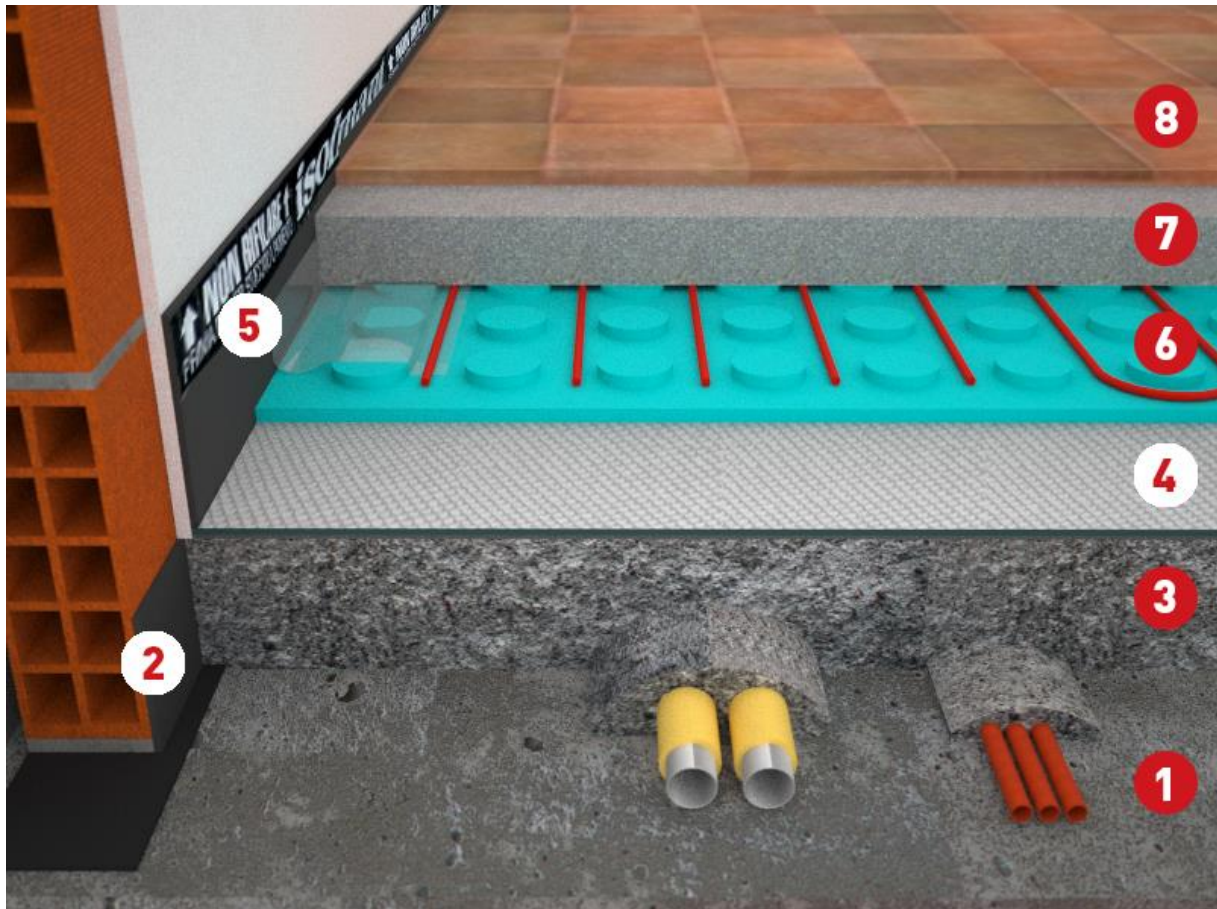


# Underfloor heating and cooling system



1. Floor slab
2. Isolmant flanking strips
3. Levelling layer
4. Isolmant resilient mat (Radiante or UnderSpecial)
5. Fascia Perimetrale Isolmant (Tecnica Reticolata or Tecnica Doppio Spessore)
6. Underfloor heating and cooling panel
7. Screed
8. Finishing

## Description

The "floating screed" solution is essential for impact sound insulation also when floor heating system is installed. The thermal panels supporting the pipes have no acoustic properties, and do not act as "spring" for floating screed vibration insulation. On the contrary, Isolmant mats guarantee low dynamic stiffness, damping effects, and continuity all over the surface, thus preventing any acoustic bridge.