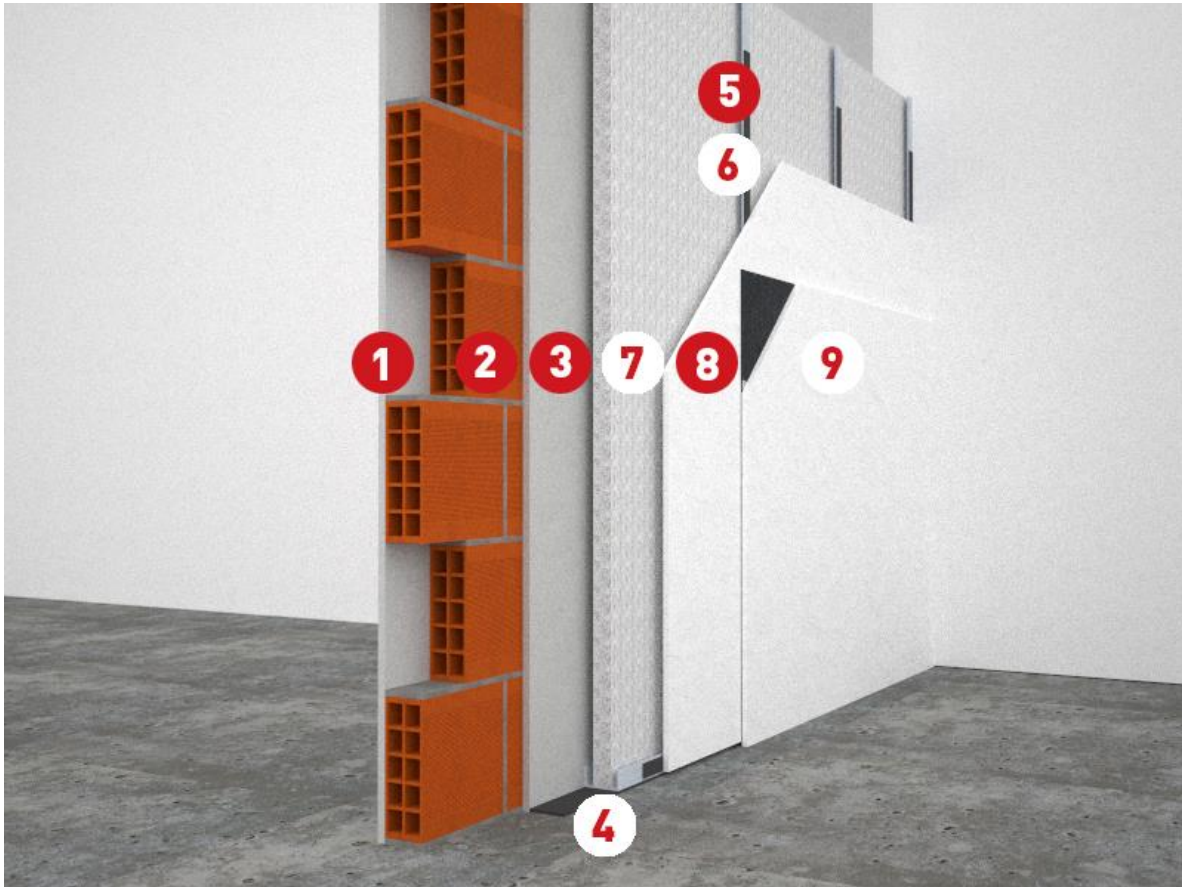


Light steel frame walls and false wall



1. Plaster
2. Existing masonry
3. Mortar
4. Isolmant Fascia Tagliamuro IsolGypsum
5. Metallic frame
6. Isolmant Nastro Orditura Cartongesso
7. Isolmant fiber panel (Perfetto CG or Perfetto RB)
8. Plasterboard
9. Isolmant IsolGypsum Gomma

Description

The dry walls, with plasterboard or gypsum fibre boards and insulating material in cavity, enable to achieve the best performance in terms of acoustic insulation to airborne noise, and also to increase the thermal insulation of the structure. Optimal performances are obtained by applying a board of IsolGypsum Gomma on the first plasterboard, in order to use the damping effect of the resilient sheet. Perfetto CG fiber provides high absorption of the sound field in the cavity, thanks to its morphological structure and its density that increases in thickness.