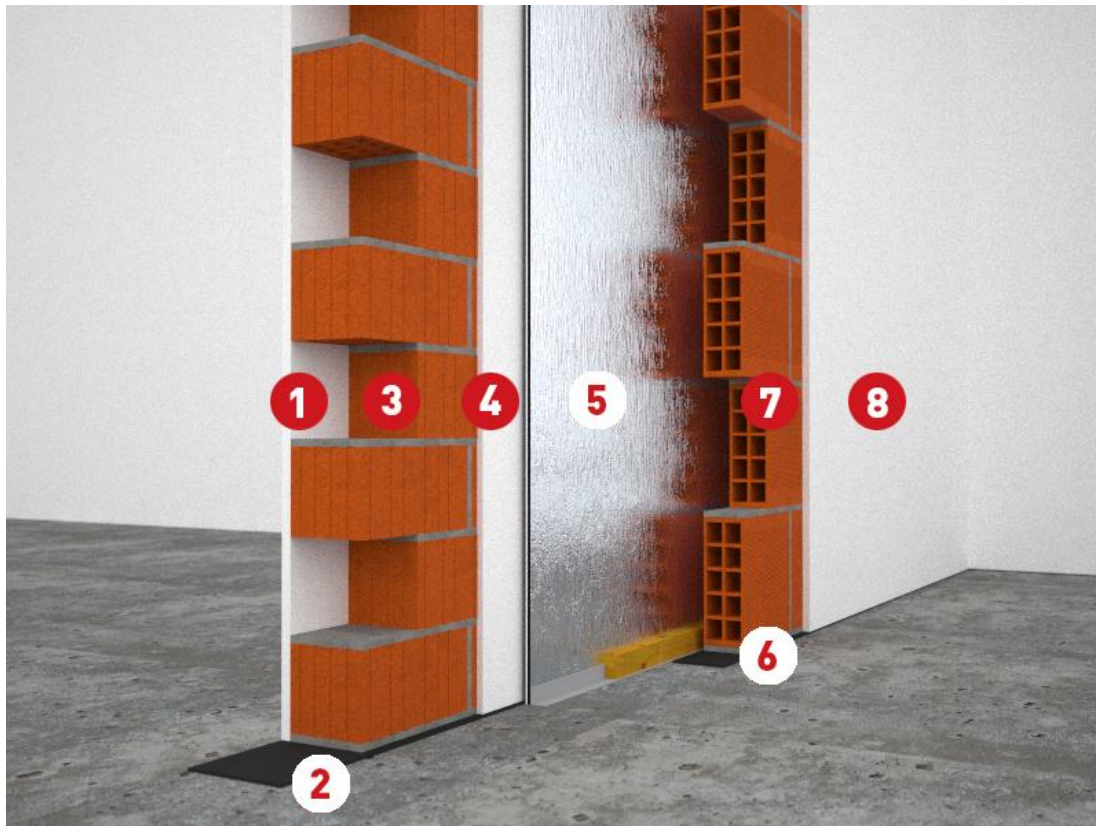


## Radiant barrier and thin air gap



1. Plaster
2. Isolmant Fascia Tagliamuro
3. Wall leaf
4. Mortar
5. Radiant barrier Isolmant Polimuro Reflex
6. Isolmant Fascia Tagliamuro
7. Wall leaf
8. Plaster

### Description

Isolmant Polimuro Reflex is radiant barrier, featured by high thermal and acoustic performances. It is recommended for small size cavities (2-3 cm). The pure aluminium sheet provides a perfect vapour resistant barrier, and thanks to its low emissivity rate ( $\epsilon = 0.04$ ), it ensures 95% radiant heat gain and an improvement of 70% of air gap thermal resistance.

The greatest improvement is obtained when Isolmant Polimuro Reflex is interposed between two vertical air gaps of 20 mm thickness. Isolmant Polimuro Alu can be used in single cavity air gap of 20 mm. Isolmant Polimuro Reflex barriers should be installed by laying the sheets side by side and sealing them by means of Isolmant Nastro Alluminio.