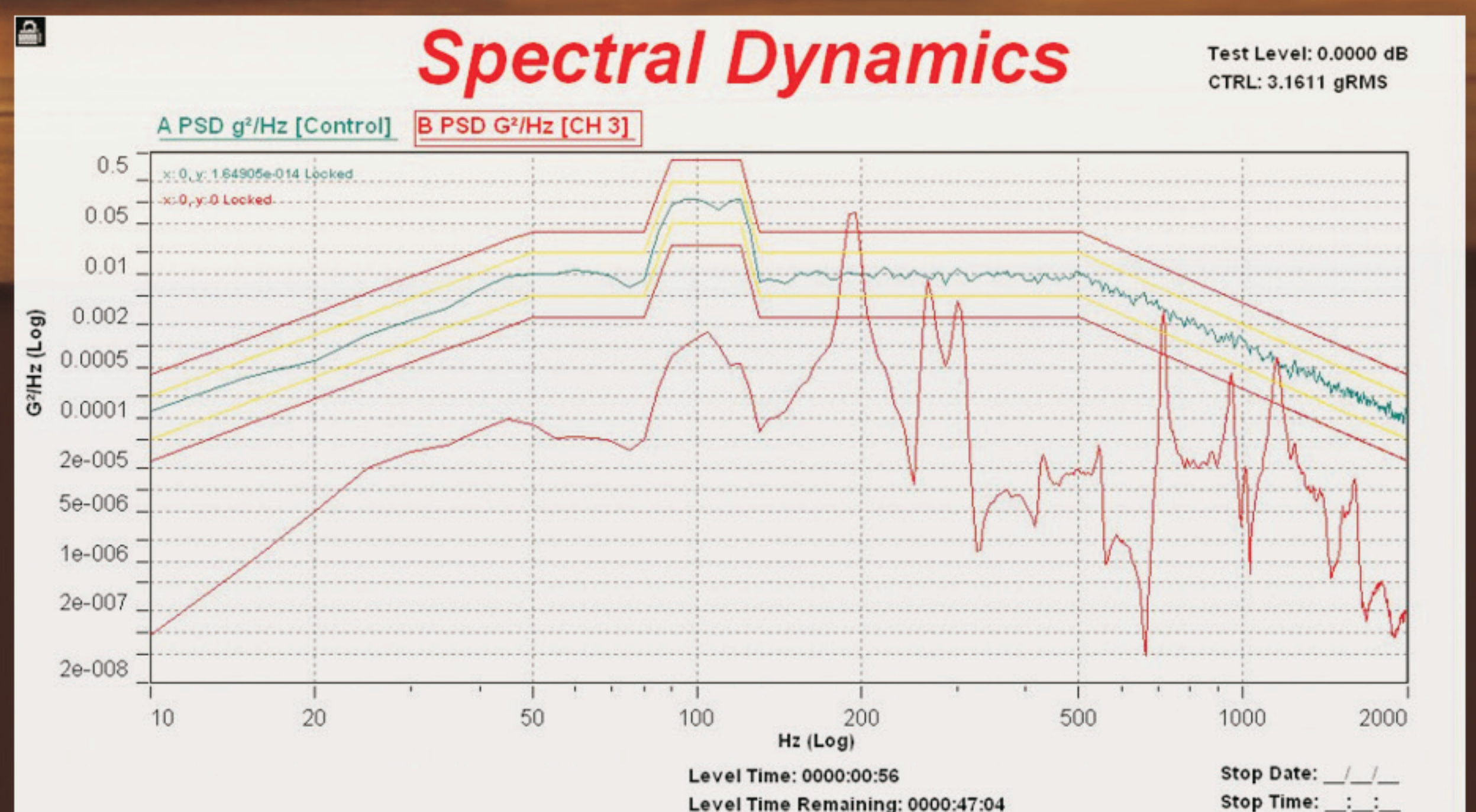


Spectral Dynamics Announces...

Lynx

**24 bit input, compact,
powerful, rugged
and affordable**

- 4 input channels with ICP®
- Powerful multiple DSP architecture
- Comprehensive vibration test capabilities:
Random • Sine • Classical Shock
with SRS displays
- Autoranging inputs and output
attenuators for over 90 dB useable
Dynamic Range
- Extensive Safety, Automation,
and Test Configuration features
- Flexible data storage with display overlays
of current and stored test results
- Powerful hardware Processor for the
fastest and most accurate Control possible
- Fully documented Post-Test summary
with and without Microsoft Office



S P E C T R A L
D Y N A M I C S