

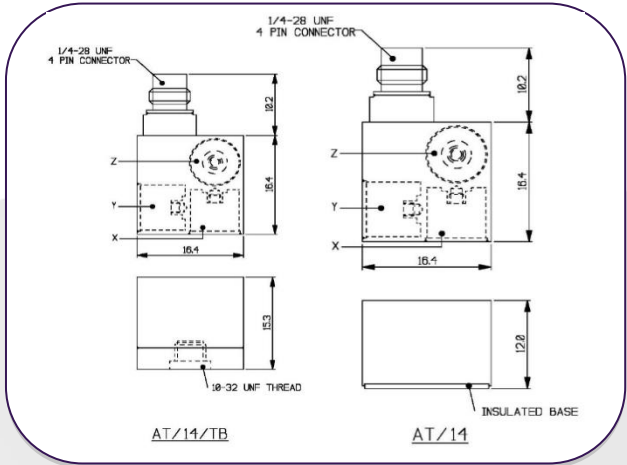


AT/14, AT14/TB Triaxial Piezo-Tronic IEPE Accelerometer

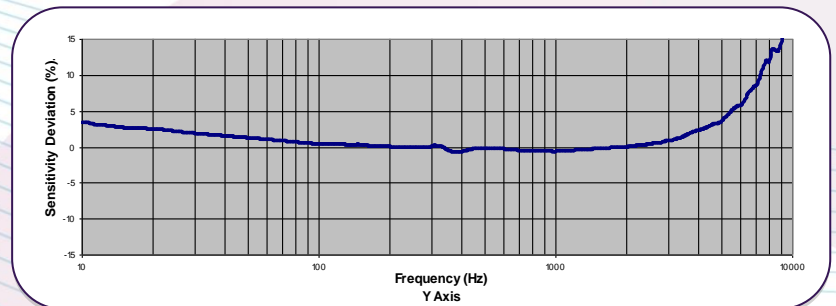
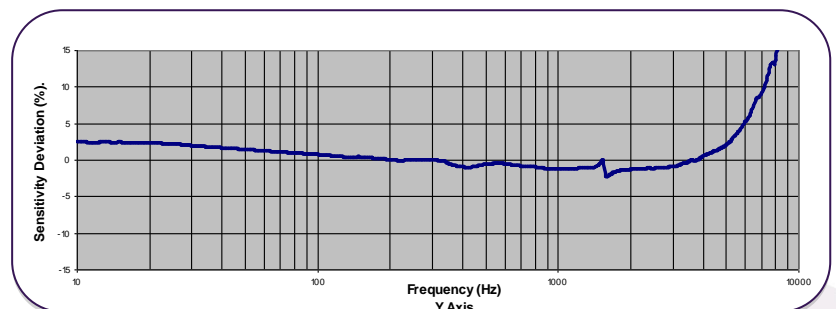
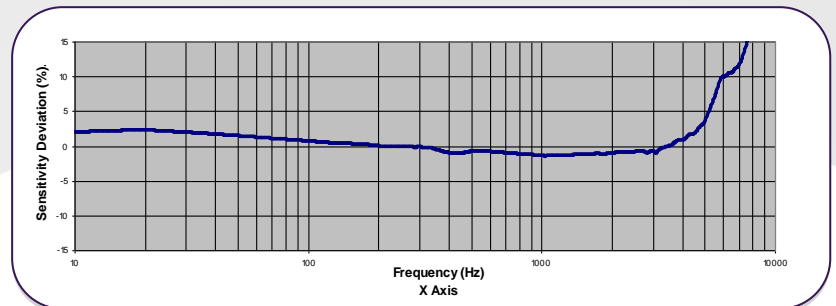
1mV/g up to 200mV/g $\pm 10\%$ 12/18gm Std Temp 125°C (HT185 °C)

A lightweight general purpose triaxial vibration transducer comprising of three voltage output piezo-electric sensing elements mounted orthogonally within a titanium block with welded construction. The AT/14 is based upon the unique DJB Konic shear design and maybe considered as an alternative to the A/131 or A/134. However, the latter by virtue of being a grouping of single axis devices, are repairable and in addition the physical separation of the cable leads to visible signal axis traceability.

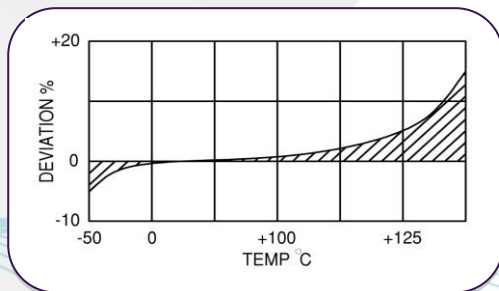
With a 1/4-28 UNF 4 pin connector and ruggedized single cables with three BNC labelled breakout leads the AT/14 is well suited to Automotive/Aerospace applications.



Typical Frequency Response



Temperature Response



Typical Spectral Noise (100mV/g):

1Hz	123 μ g/ \sqrt Hz
10Hz	98 μ g/ \sqrt Hz
100Hz	37 μ g/ \sqrt Hz
1kHz	12 μ g/ \sqrt Hz
10kHz	8 μ g/ \sqrt Hz



**AT/14, AT14/TB Triaxial
Piezo-Tronic IEPE Accelerometer**

1mV/g up to 200mV/g ±10% 12/18gm Std Temp 125°C (HT185°C)

	Metric	Imperial
Voltage Sensitivity @ 20°C mV/g ±10%	1.02mV/(m/s ²) 20.4mV/(m/s ²)	10 mV/g 200 mV/g
Resonant Frequency kHz ≥	33kHz	33kHz
Cross Axis Error % max	≤5	≤5
Typical Frequency range (X/Y/Z Axis) (±5%)	1 to 6kHz	1 to 6kHz
Temperature Range	-50/ +125°C (185°C HT)	-58/ +257°F (365°F HT)
Voltage Sensitivity re 20°C/68°F	-5% @ -50°C +5% @ +125°C +10% @ +185°C	-5% @ -58°F +5% @ +257°F +10% @ +365°F
Base Strain Sensitivity	<0.01 g/μ strain	<0.01 g/μ strain
Max Continuous accn.g sine	49,033m/s ²	5000g
Saturation limit equiv. g	4,903 m/s ² 490m/s ²	500g 50g
Supply Voltage V DC	15/35	15/35
Bias Voltage V DC (20°C)	9/10	9/10
Case Material	Titanium	Titanium
Mounting	Adhesive or 10-32 UNF tapped hole	Adhesive or 10-32 UNF tapped hole
Weight	12gm AT/14 18gm AT/14/TB	0.42oz 0.63oz
Case Seal	Welded	Welded
Connector	¼ -28UNF, 4 Pin Connector	¼ -28UNF, 4 Pin Connector
Size	16.4 x 16.4 x 12mm AT/14 16.4 x 16.4 x 15.3mm AT/14/TB	0.65 x 0.65 x 0.47in 0.65 x 0.65 x 0.60in