



## AT/13 Triaxial Piezo-Tronic IEPE Accelerometer

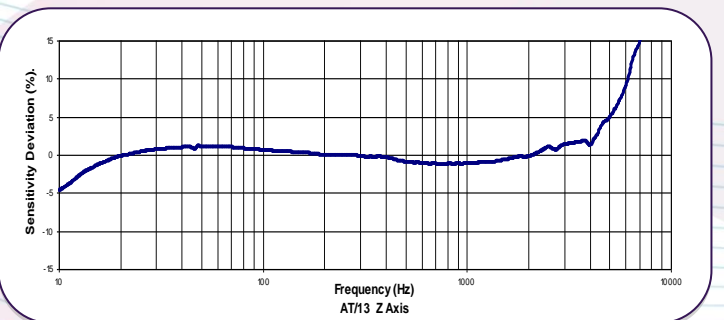
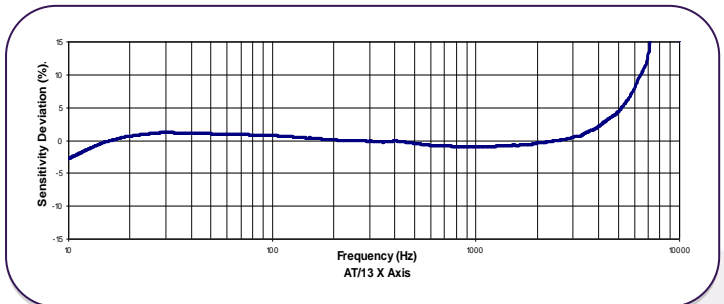
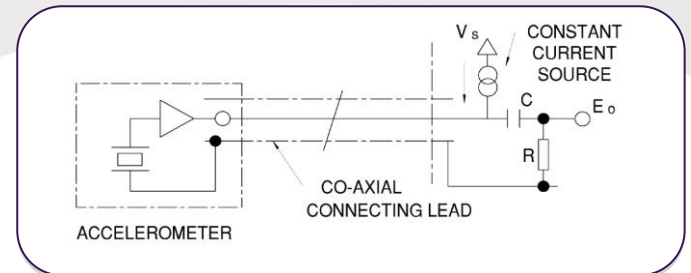
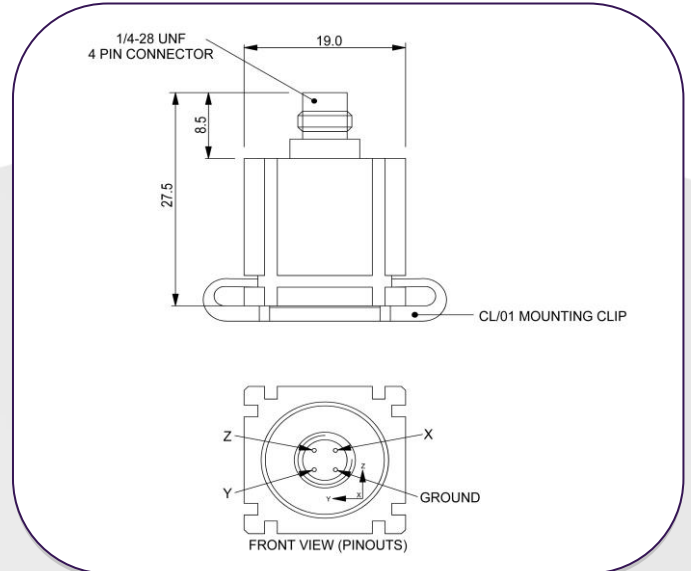
10mV/g up to 100mV/g  $\pm 10\%$     23gm    Std Temp 125°C (185°C HT)

The AT/13 has been developed primarily for the Modal Analysis and Structural test marketplace with particular focus on the Automotive and Aerospace markets. The slotted sides and a slotted base allow it to be mounted on 5 of its faces by sliding into the accompanying clip. Users can then mount the clips using normal glue methods and slide the accelerometers in and out of the clip as required. This ensures perfect repeatability for tests without the need for leaving the accelerometer in situ. In addition, for large channel count testing, all accelerometers can be mounted in the same orientation making software set up easier.

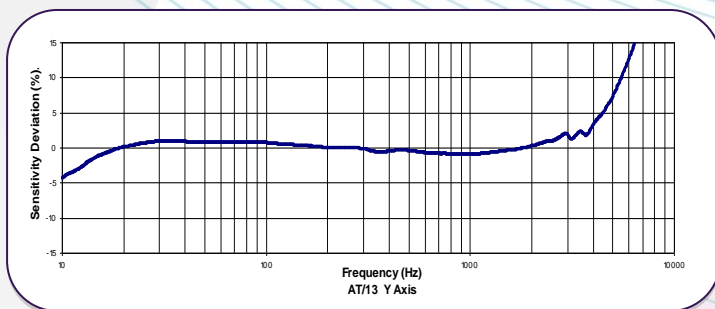
Manufactured in Titanium for low mass and long life, the AT/13 has three individual Konic Shear sensing elements internally mounted in the three orthogonal axes; this provides excellent performance in each axis with minimal cross axis effects.

The AT/13 is available as charge output or as IEPE voltage output.

Clip part number CL/01 can be ordered separately. Also available is the CL/02 which has a thicker base and can be modified to suit specific user applications.



### Typical Frequency Response



**DJB Instruments (UK) Ltd**

Finchley Avenue,  
Mildenhall, Suffolk IP28 7BG

Tel +44 (0)1638 712 288  
Email [sales@djbinstruments.com](mailto:sales@djbinstruments.com)  
Web [www.djbinstruments.com](http://www.djbinstruments.com)

A UK company with UK-based manufacturing, assembly and calibration in-house.

DJB Iss.1





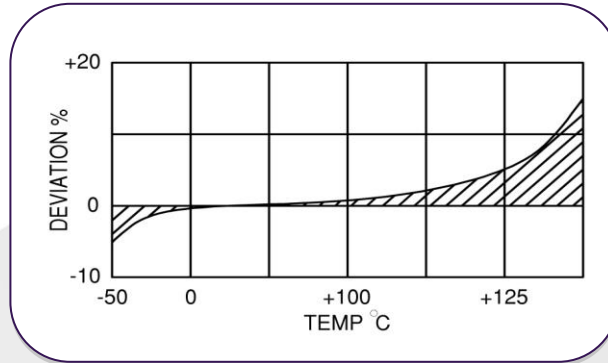
## AT/13 Triaxial Piezo-Tronic IEPE Accelerometer

10mV/g up to 100mV/g  $\pm 10\%$

23gm

Std Temp 125°C (185°C HT)

### Temperature



	Metric		Imperial	
Voltage Sensitivity $\pm 10\%$	1.02 mV/(m/s <sup>2</sup> )	10.2 mV/(m/s <sup>2</sup> )	10mV/g	100mV/g
Resonant frequency kHz	33		33	
Cross Axis error % max	5		5	
Temperature Range	-50/+125°C (HT Version 185°C)		-58/+257°F (HT Version 365°F)	
Voltage sensitivity re 20°C / 68°F	-5% @ -50°C +5% @ +125°C (max 185°C)		-5% @ -58°F +5% @ +257°F (max 365°F)	
Supply voltage V DC	15/ 35		15/ 35	
Supply voltage mA	2/15		2/15	
Bias voltage V DC (20°C/68 °F)	9/10		9/10	
Settling time to 90% final val. secs	<1		<1	
Max continuous accn. sine	49,033m/s <sup>2</sup>		5000g	
Saturation Limit	4,412m/s <sup>2</sup>	4,903 m/s <sup>2</sup>	450g	500g
L.F corner frequency, Hz	0.1	1	0.1	1
Case material	Titanium Grade 2		Titanium Grade 2	
Mounting	Adhesive or CL/01 or CL/02 Mounting Clip		Adhesive or CL/01 or CL/02 Mounting Clip	
Weight	23g		0.8oz	
Case seal	Welded hermetic connector		Welded hermetic connector	
Size	19 x 19 x 19mm		0.75 x 0.75 x 0.75in	
Connector	4 pin ¼-28 UNF		4 pin ¼-28 UNF	

### DJB Instruments (UK) Ltd

Finchley Avenue,  
Mildenhall, Suffolk IP28 7BG

A UK company with UK-based manufacturing, assembly and calibration in-house.

**Tel** +44 (0)1638 712 288  
**Email** sales@djbinstruments.com  
**Web** www.djbinstruments.com

DJB Iss.1

