

A/30, A/30-1 Triaxial Piezoelectric Accelerometer

25pC/g nom. 38gm 220°C Max



General purpose triaxial vibration transducer comprising three welded Konic shear sensing elements bonded orthogonally into hard anodized aluminum housing. The inserts are electrically insulated individually and from the housing, thus eliminating ground loop interference.

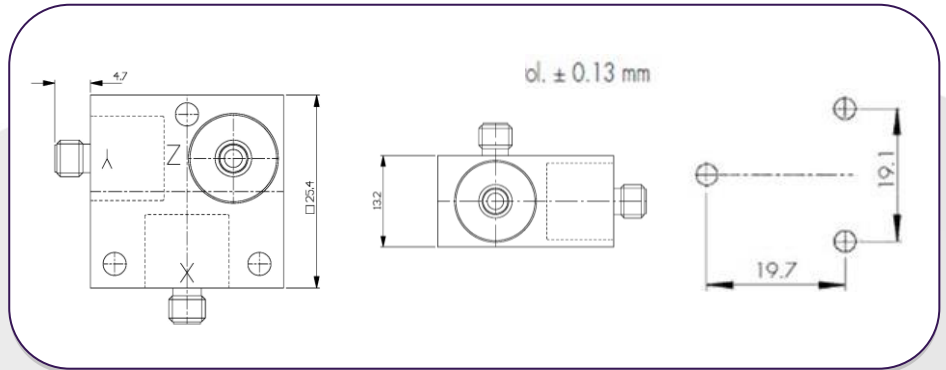
The additional mechanical isolation implicit in the construction provides near elimination of strain induced error. The spatial response of a structure to dynamic forcing, may lead to erroneous single axis vibration or shock measurement, due to the inherent directional property of the transducer.

In cases where is deemed to be a problem, an orthogonal three axis measurement, allowing computation of absolute value and direction offers a solution.

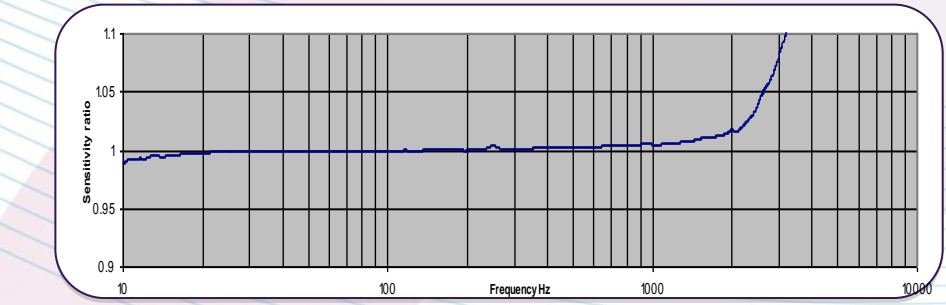
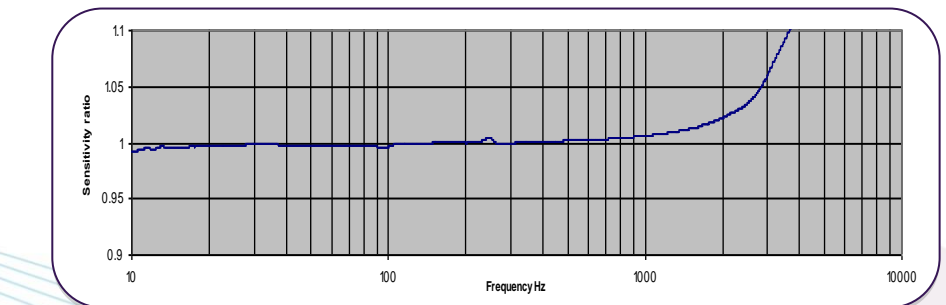
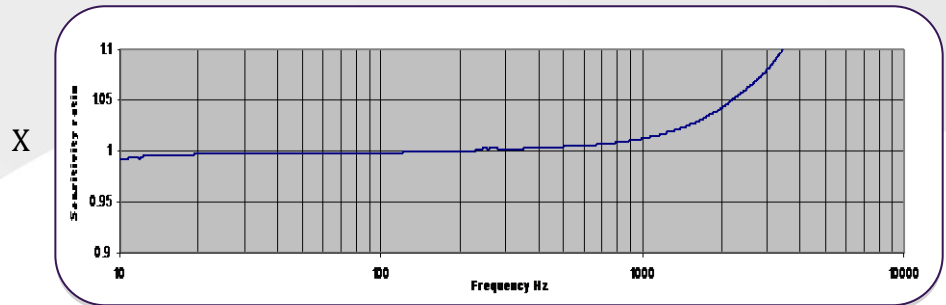
The d33 component suppression property of the Konic design, resulting in minimization of cross axis error, is particularly advantageous for three axis measurement integrity.

A/30

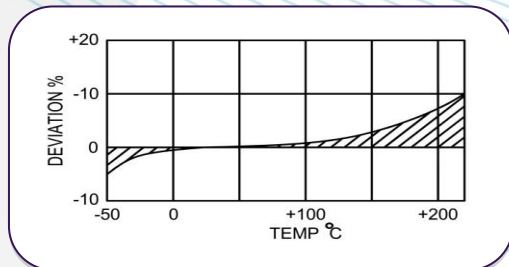
A/30 fixings



Typical Frequency Response



Temperature Response



A/30, A/30-1 Triaxial Piezoelectric Accelerometer

25pC/g nom.

38gm

220°C Max



Options

- Wideband temperature calibration

	Metric			Imperial		
Charge sensitivity nom.	2.04pC/(m/s ²)	2.55pC/(m/s ²)		20pC/g	25pC/g	
Capacitance pF	900/1400			900/1400		
Resonant Frequency kHz	X (13)	Y (13)	Z (15)	X (13)	Y (13)	Z (15)
Cross Axis error % max	5			5		
Temperature Range	-50/ +220°C			-58/ +428°F		
Charge sensitivity deviation re 20°C/68°F	-5% @ -50°C +10% @ 220°C			-5% @ -58°F +10% @ +428°F		
Frequency Response	1Hz – 3KHz ± 5%			1Hz – 3KHz ± 5%		
Maximum Continuous 'g/oz level	9,807m/s ²			1000g		
Case Material	s/steel 303 S31 Hard Anodized Aluminum Alloy Mounting Block			s/steel 303 S31 Hard Anodized Aluminum Alloy Mounting Block		
Connector	10-32 UNF Microdot			10-32 UNF Microdot		
Weight	38g			1.34oz		
Mounting	3 x 3mm Ø through holes (A/30) 1 x M4 Ø through hole + 3 tapped 10-32 UNF x 4mm deep (A/30-1)			3 x 0.11in Ø through holes (A/30) 1 x M4 Ø through hole + 3 tapped 10-32 UNF x 0.157in deep (A/30-1)		
Size	25.4 x 25.4 x 13.2mm			1 x 1 x 0.52in		
Maximum shock g level, rise time µs	98100m/s ² , 30			10000g,30		
Base strain Sensitivity	<0.01 g/µ strain			<0.01 g/µ strain		
Case Seal	Welded			Welded		