

A/25/E Miniature Piezoelectric Accelerometer

2pC/g nom.

1.5gm

200°C Max



Sub-miniature, all welded, Konic shear sensing element based vibration transducer. The low mass of the A/25/E renders its transparent in the vast majority of light weight structure vibration measurement applications.

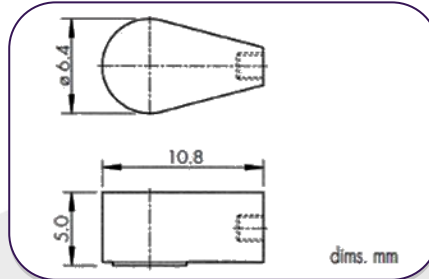
The A/25/E is adhesive mounted. A detachment tool is provided to shear adhesive joints. Shock removal is to be avoided as being deleterious to the integrity of the transducer.

Abrasive cleaning of the attachment face will reduce base thickness over time; sparing use of adhesive will aid longevity and data accuracy.

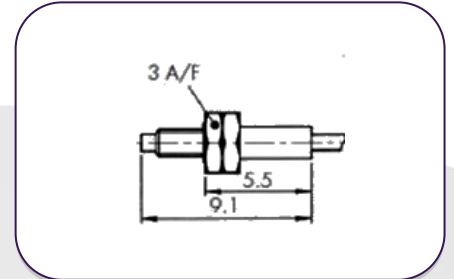
Signal outlet is via a surface contact socket. Mating connector preload torque should be 7cNm, the locknut tightened to 12cNm for

Signal integrity to 10,000g. Insufficient preload may result in intermittent signal loss.

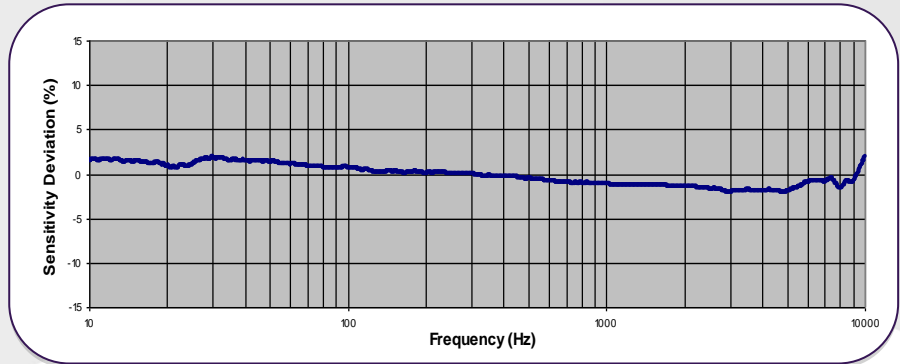
A/25/E



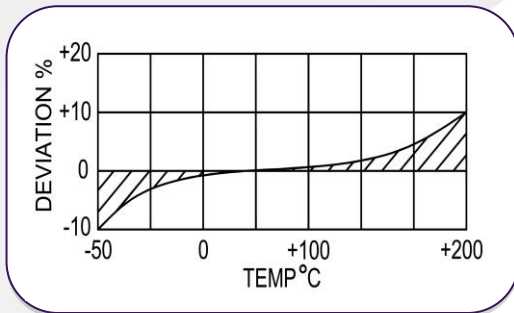
A/25/E L5 Connector



Typical Frequency Response



Temperature Response



Options

- Wideband temperature calibration -50/+200°C
- Proof shock testing

Available at a tri-axial designated type A/32

	Metric		Imperial	
Charge sensitivity nom.	0.13pC/(m/s ²)	0.27pC/(m/s ²)	1.3pC/g	2.7pC/g
Capacitance pF	220	320	220	
Resonant Frequency KHz	≈50		≈50	
Cross Axis error % max	5		5	
Temperature Range	-50/ +200°C		-58/ +392°F	
Charge sensitivity deviation re 20°C	-5% @ -50°C +15% @ +200°C		-5% @ -58°F +15% @ +392°F	
Frequency Response +/-5%	1Hz - 10KHz		1Hz - 10KHz +/-5%	
Maximum Continuous g level	49,033m/s ²		5000g	
Max Shock g level, rise time us	98100m/s ² , 20		10000g, 20	
Case Material	s/steel 303 S31		s/steel 303 S31	
Mounting	Adhesive		Adhesive	
Weight	1.5gm		0.05oz	
Connector	L5		L5	
Size	10.8 x 6.4 x 5mm		0.43 x 0.25 x 0.20in	