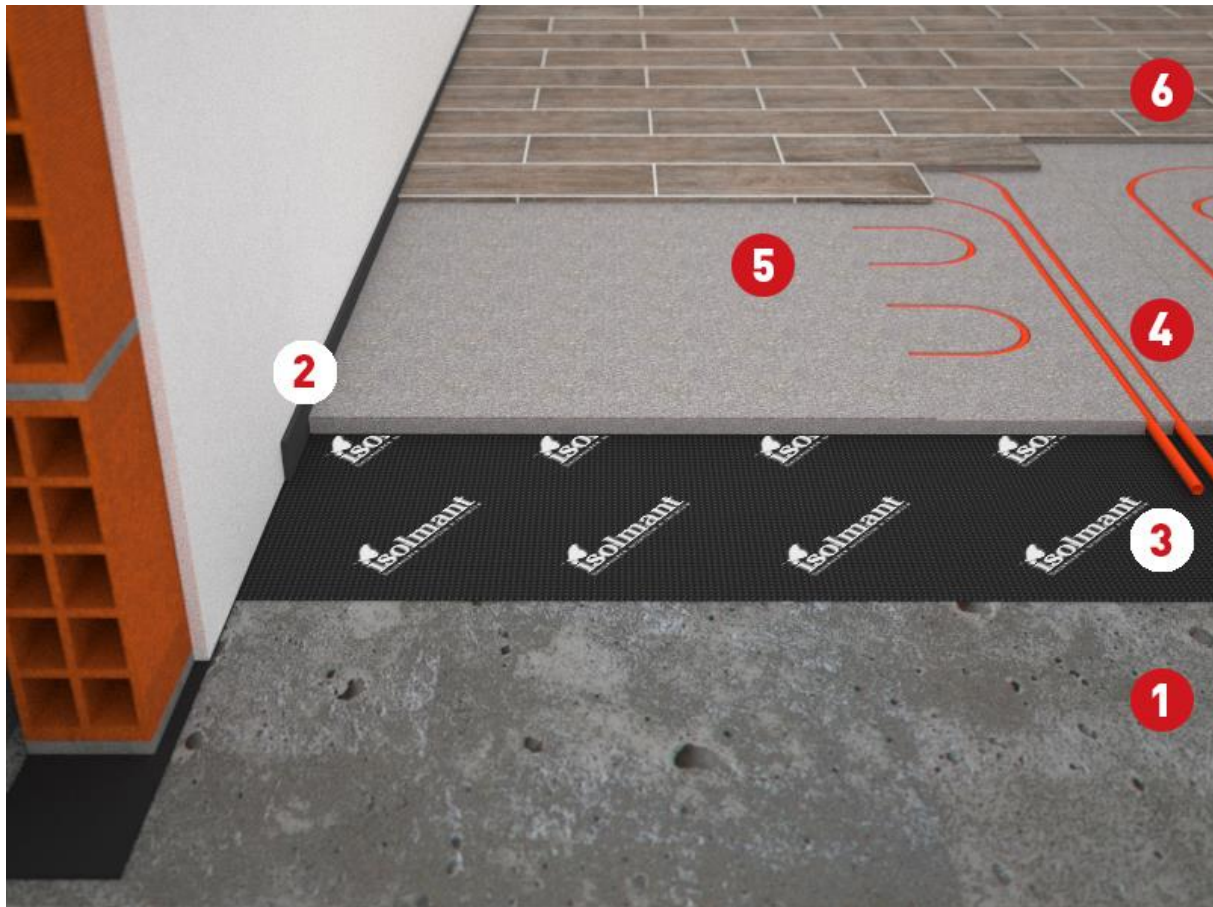


# Low inertia heating and cooling system



1. Floor slab
2. Fascia Perimetrale Isolmant (Radiante or Tecnica Doppio Spessore)
3. Isolmant resilinet mat (IsolTile)
4. Thin underfloor heating and cooling panel
5. w thickness screed
6. Finishing

## Description

The radiant systems with low inertia in low thickness are mainly indicated in renovation, where they can be installed on the existing floor without other costly interventions (such as demolition of screeds). Even with a thin screed, the use of Isolmant Isoltile guarantees adequate impact sound insulation.

An underlay material under parquet or laminate with very low thermal resistance such as IsolDrum PU Radiante combines the comfort, specific to a wood finish, with the needs of an underfloor heating system with low thermal inertia, heating and cooling in a short time.