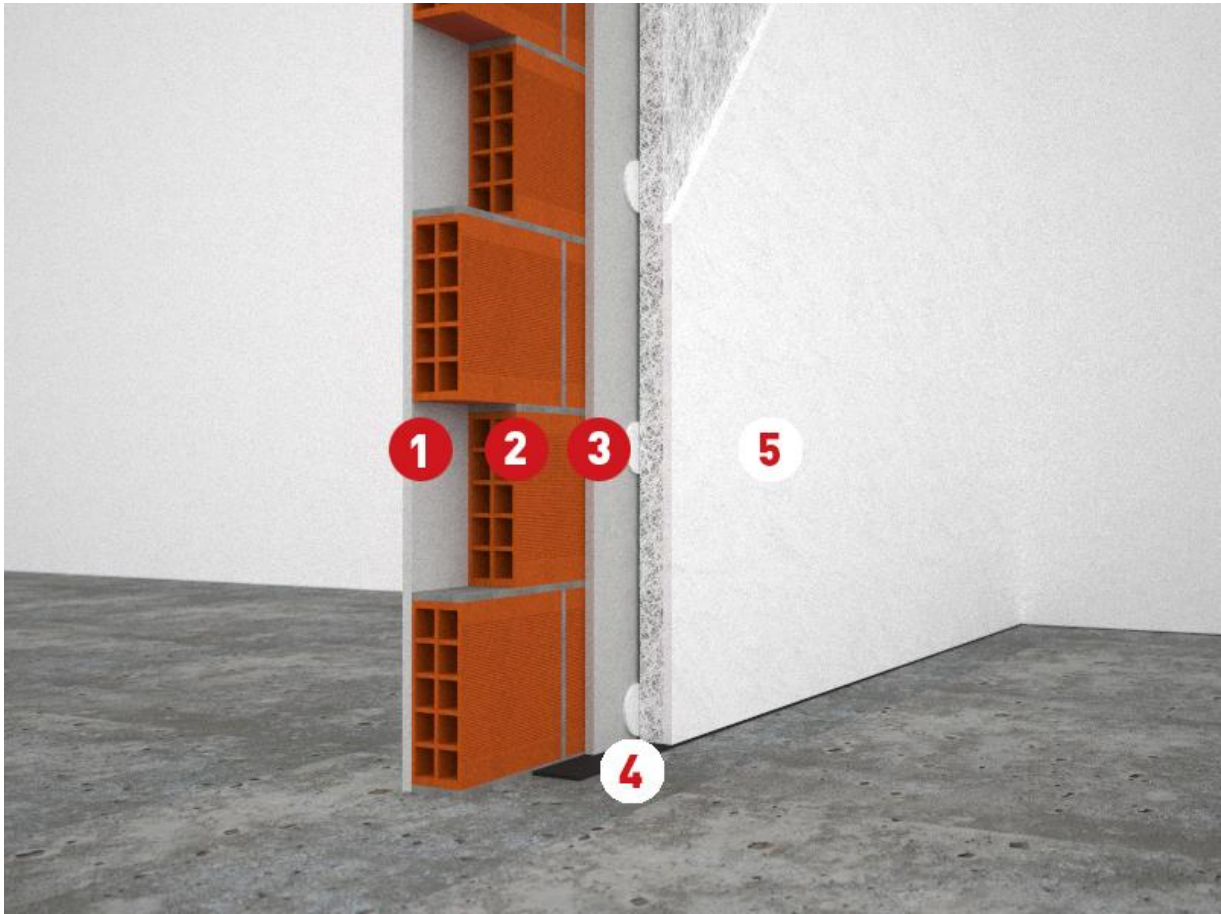


# Interior lining



1. Plaster
2. Existing masonry
3. Mortar
4. Isolmant Fascia Tagliamuro IsolGypsum
5. Isolmant IsolGypsum (Fibra or GP or Gomma XL)

## Description

The IsolGypsum products are excellent for obtaining acoustic and thermal insulation in very low thickness. The advantages of this solution are the ease of installation, by means of glue, and the significant improvement of the sound insulation of the wall thanks to the effect "mass-spring" of the components.