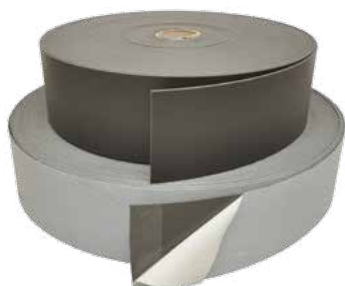




→ **ISOLMANT FASCIA PERIMETRALE 6.E**



Flanking strips made of 6 mm Isolmant Strong (high density 70 kg/m³ expanded closed-cell physically crosslinked polyethylene) available in two version:

- adhesive with tree different high 10, 15 and 30 cm
- not adhesive with tree different high 10, 15 and 30 cm



isolmantFasciaPRM

THICKNESS	Approx. 6 mm
SIZE	strips h 10 cm by 50 m in length strips h 15 cm by 50 m in length strips h 30 cm by 50 m in length (not adhesive and adhesive version)
PACKAGING	h 10 cm 15 strips = 750 m (1 roll) h 15 cm 10 strips = 500 m (1 roll) h 30 cm 5 strips = 250 m (1 roll) minimum amount: at least 2 rolls of adhesive product (different strip high can be chosen)

→ **ISOLMANT FASCIA PERIMETRALE 10.E**



Flanking strips made of 10 mm high quality expanded closed-cell cross-linked polyethylene available in two version:

- adhesive with four different high 10, 15, 20 and 30 cm
- not adhesive with four different high 10, 15, 20 and 30 cm



isolmantFasciaPRM

THICKNESS	Approx. 10 mm
SIZE	strips h 10 cm by 60 m in length strips h 15 cm by 60 m in length strips h 20 cm by 60 m in length strips h 30 cm by 60 m in length (not adhesive and adhesive version)
PACKAGING	h 10 cm 12 strips = 720 m (1 roll) h 15 cm 8 strips = 480 m (1 roll) h 20 cm 6 strips = 360 m (1 roll) h 30 cm 4 strips = 240 m (1 roll) minimum amount: at least 2 rolls of adhesive product (different strip high can be chosen)

FLANKING PATH NOISE REDUCTION

The acoustic efficiency of floating floor with air cavity will be adversely affected if acoustic bridging between the floating layer and the surrounding structure should occur. When installed around the floor perimeter eliminates acoustic flanking with the wall and the treatments.

INSTALLATION

- Use adhesive or metal staplers to attach the strips to the wall and to plinth base structures;
- Strips must be placed in the joint between the screed (wet or dry laid) and the surrounding walls, trapped to the wall;
- Before pouring concrete screes, seal the joint between the flanking strip and the Isolmant sheet with Isolmant Nastro Telato;
- Cut off the excess part only after laying the flooring, before applying the baseboard.

→ **Conditions of use**

Flankin strips are essential when to prevent vibration transmission from floating floor to the partition wall or plinth base structures. It is particularly recommended with floating floor with air cavity.

→ **Item specifications**

Flanking strips made of 6 mm high density (70 kg/m³) expanded closed-cell physically cross-linked polyethylene. Available in adhesive and not adhesive versions with tree different high 10, 15 and 30 cm.

→ **Conditions of use**

Flankin strips are essential when to prevent vibration transmission from floating floor to the partition wall or plinth base structures. It is particularly recommended with floating floor with air cavity.

→ **Item specifications**

Flanking strips made of 10 mm expanded closedcell cross-linked polyethylene (30 kg/m³). Available in adhesive and not adhesive versions with four different high 10, 15, 20 and 30 cm.

WARNING: This technical data sheet is not a valid specification and, if it consist of multiple pages, be sure to read the full document. This instruction are the best of our current experience but are indicative information. Assuming the liability resulting from the use of this product, it is up to the user to establish whether the product is suitable for the intended use.